



# LigoDLB 5-20 ac

5GHz High-Capacity Wireless Device

# 500 + Mbps

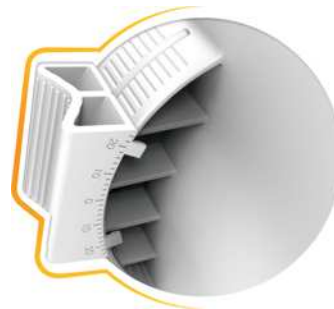
## Incredible performance

500+ Mbps throughput - a result of powerful hardware platform with 802.11ac technology based radio and a proprietary data transmission protocol (iPoll). Incorporating a QCA 9563 CPU (750 MHz), a QCA 9882 radio and 64 MBytes of RAM and 16 MBytes of flash memory, the LigoDLB 5-15 ac series devices are an ideal solution for capacity demanding applications. State of the art RF design with great output power and sensitivity parameters improve range and capacity over highest the modulation - 256 QAM. The 24V Gigabit Ethernet port (passive PoE) allows utilizing the full capacity of the radio when used in a point-to-point or point-to-multipoint network design. LigoDLB ac series devices are backwards compatible with LigoDLB devices using iPoll mode, which helps to expand or upgrade existing networks using the latest technologies over time.



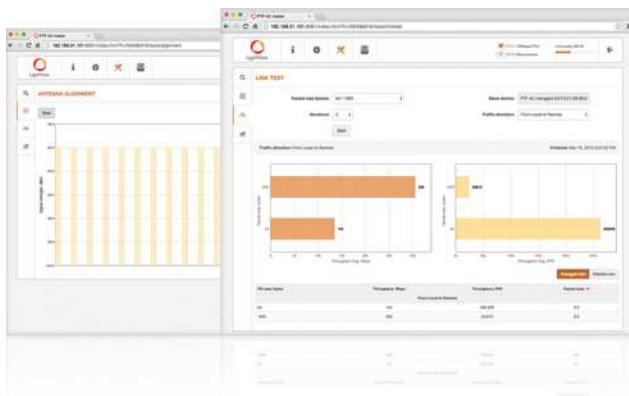
### New form factor

The shape of the enclosure is now smaller, lighter but retains the IP-66 weather protection rating. Smaller packaging reduces freight costs and makes them less obvious. The new design has no metal parts, which makes them lighter and corrosion resistant.



### New mounting

The adjustable mounting bracket is very easy to assemble and install. It consists of two easy to connect parts that allow tilting the device up and down when installing on a pole. A metal strap is included to securely tighten the device. This design includes additional reinforcements and thicker materials to ensure survival in extreme climate conditions.



### Powerfull OS

The LigoDLB OS is a highly functional and easy to use operating system embedded in all LigoDLB hardware devices for effortless setup and trouble free operation. High performance (500 Mbps) allows offering more bandwidth together with additional services such as VoIP and IPTV. This is possible when using LigoWave's smart QoS mechanism and multi-cast traffic enhancements for triple play services. Such services are essential for all next generation service providers to complement their existing portfolios. iPoll, LigoWave's proprietary transmission protocol, ensures smooth performance with a high number of clients even in noisy environments.

# Specifications

Distance Recommendation	PTMP Mode	PTP Mode
LigoDLB 5-20ac	10km/ 6.21mi	15km/ 9.32mi

## Wireless

WLAN Standard	IEEE 802.11a/n/ac, iPoll 3
Radio Mode	MIMO 2x2
Radio Frequency Band	5GHz models: 5.150 - 5.850GHz (FCC 5.150 - 5.250 and 5.725 - 5.850GHz) (Country Dependent)
Transmit Power	Up to 30dBm (Country dependent)
Channel Size	5, 10, 20, 40, 80MHz
Modulation Schemes	802.11a/n: OFDM (64-QAM, 16-QAM, QPSK, BPSK) 802.11ac: OFDM (256-QAM, 64-QAM, 16-QAM, QPSK, BPSK)
Data Rates	802.11ac @ 40 MHz: 400, 360, 300, 270, 240, 180, 120, 90, 60, 30Mbps 802.11ac @ 80 MHz: 866, 780, 650, 585, 520, 390, 260, 195, 130, 65Mbps
Error Correction	FEC, LDPC
Duplexing Scheme	Time Division Duplex

40 MHz	Modulation, Mbps	400	360	300	270	240	180	120	90	60	30
	TX Power, dBm	26	27	28	29	30	30	30	30	30	30
	Receive Sensitivity, dBm	-70	-72	-76	-78	-80	-84	-87	-92	-94	-95
80 MHz	Modulation, Mbps	866	780	650	585	520	390	260	195	130	65
	TX Power, dBm	24	25	25	26	27	28	28	29	29	29
	Receive Sensitivity, dBm	-64	-66	-70	-72	-74	-78	-81	-85	-88	-90

## Antenna

Type	Integrated Dual-Polarized Directional Panel Antenna
Gain	20dBi

## Wired

Interface	10/100/1000 Base-T, RJ45
-----------	--------------------------

## Physical

Dimensions	216mm (8.5 "), 184mm (7.2 "), 80mm (3.1 ")
Weight	413g (0.91lb)
Mounting	Pole mounting bracket included

## Power

Power Supply	24 VDC passive PoE (AC to 24 VDC adapter is included in the package)
Power Source	100 – 240VAC
Max Power Consumption	10W

## Environmental

Operating temperature	-40°C (-40°F) ~ +65°C (+149°F)
Humidity	0 ~ 90 % (Non-Condensing)

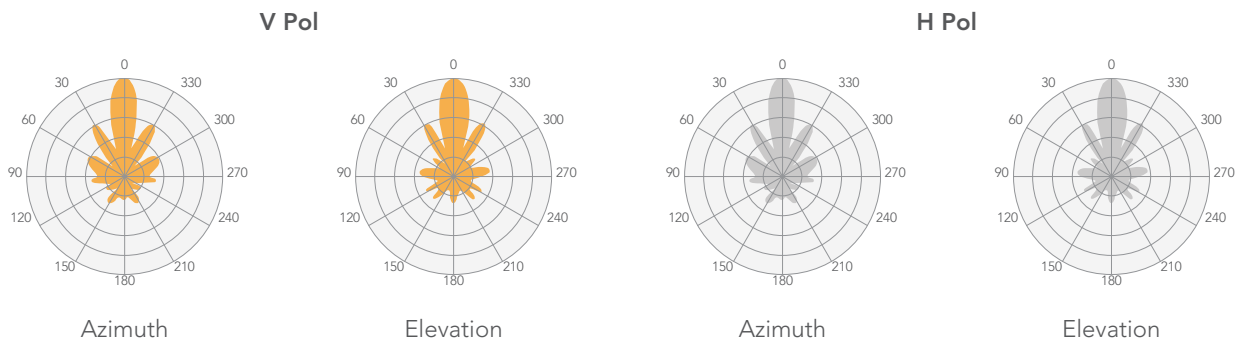
## Management

System Monitoring	SNMP v3, Syslog, Web UI, WNMS
Configuration	WebUI, WNMS

## Regulatory

Certification	FCC/IC/C
---------------	----------

## Antenna specifications



Frequency Range	5.1 - 5.9GHz
Gain	20dBi
Polarization	Dual Linear
Cross-Pol Isolation	27dBi
VSWR	<1.8
Azimuth Beamwidth (H pol)	16deg
Azimuth Beamwidth (V pol)	16deg
Elevation Beamwidth	16deg