

GATE OPERATOR

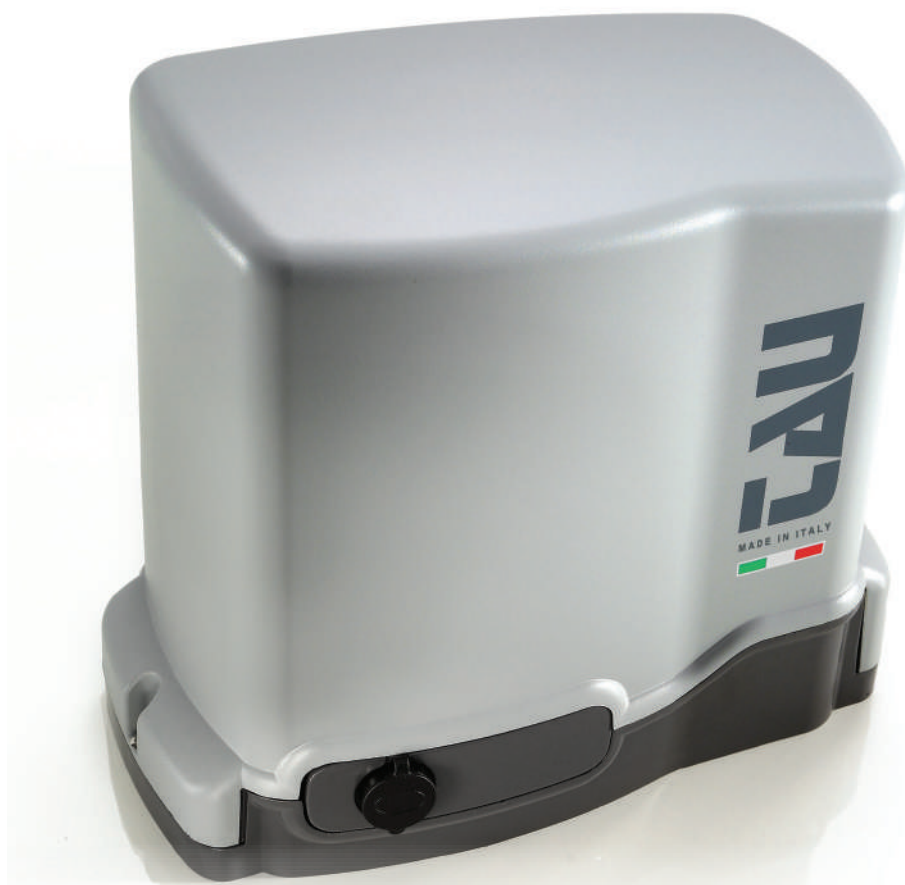
# T-ONE

6B 10B

DC  
MOTOR

Up to  
1000 kg

Speed  
14 m/min



## 350T-ONE6B

DC sliding gate operator with encoder, complete with electronic control unit and built-in 433,92 MHz rolling code radio receiver. Maximum gate weight 600 kg.

## 350T-ONE10B

DC sliding gate operator with encoder, complete with electronic control unit and built-in 433,92 MHz rolling code radio receiver. Maximum gate weight 1000 kg.



**Accessories for  
T-ONE series**  
Page 32



**Further accessories:**  
Transmitters page 234  
Photocells page 239  
Flashing lights  
page 242



**FEATURES:**

- residential/apartment building use
- for gates up to 1000 kg
- low voltage dc gate operator
- optical encoder technology (no limit switches required)
- electronic control unit with built-in two-channel receiver
- built-in battery charger

**PROS:**

- obstacle detection and crush prevention
- in accordance with EN 12453 standards
- works even during power outage thanks to the optional backup battery
- 35% faster than the 230 V version
- intensive use, ideal for use on apartment buildings and public entrances
- external emergency release available (optional, P/N 650ESE03)
- soft start and soft stop
- auto-learning of the gate stroke through optical encoder



**INTENSIVE USE**

100% continuous working cycle thanks to the low voltage DC motor.



**OPTICAL ENCODER**

Obstacle detection and anti-crushing safety ensured by the optical encoder. The encoder also manages the deceleration in the closing and opening phases and the adjustment of the gate stroke which doesn't require a limit switch.



**RELIABILITY**

Both 12 and 24 V versions work even during power outage thanks to the optional backup battery.



**TOTAL CONNECT**

By combining the 250T-CONNECT module, it is possible to control the automation remotely by your smartphone (only for T-ONE10B).

**TECHNICAL DRAWINGS**

Technical features	T-ONE6B	T-ONE10B
Power supply	230 V AC (50 - 60 Hz)	230 V AC (50 - 60 Hz)
Motor power supply	18 V DC	18 V DC
Open circuit voltage	1,05 A	1,1 A
Power rating	250 W	300 W
Max. operating speed	14 m/min	14 m/min
Duty cycle	100 %	100 %
Operating temperature	-20° C ÷ +55° C	-20° C ÷ +55° C
Motor thermal protection	-	-
Degree of protection	IP 54	IP 54
Max. gate leaf weight	600 kg	1000 kg
Pinion module	4	4
Electronic control unit	K125M	K126MA

